

B0030 Marine loading arm

Over 100 years' experience working in the fluid transfer industry, Emco Wheaton has the knowledge and pedigree, combined with the expertise and culture of innovation, to produce world class loading equipment.

We are extremely proud of our comprehensive, wide ranging product offering, and our continual ability to meet and exceed the growing demands of the global oil and gas, chemical, and transportation industries that we serve.

Emco Wheaton's B0030 marine loading arm is engineered to safely and efficiently load and unload petroleum products to and from sea-going tankers. As the preferred choice of leading global oil and gas companies, our design provides maximum safety, proven performance, and unrivaled reliability while delivering the lowest possible jetty loads.

Featuring a self-supporting design that is compatible with a range of additional equipment and accessories, the B0030 marine loading arm maximizes safety, flexibility, and ease of use (both manual and hydraulic).

The Emco Wheaton B0030 marine loading arm was designed from the ground up to meet the following industry criteria:

- **Strength and long life – to ensure a long-lasting operational service**
- **Minimum maintenance – to ensure the lowest possible cost of ownership**
- **Simplicity of repairs – to enhance safety and operating costs further.**

Innovative features further improve the functionality of the B0030 marine loading arm:

A RELIABLE BALANCING SYSTEM

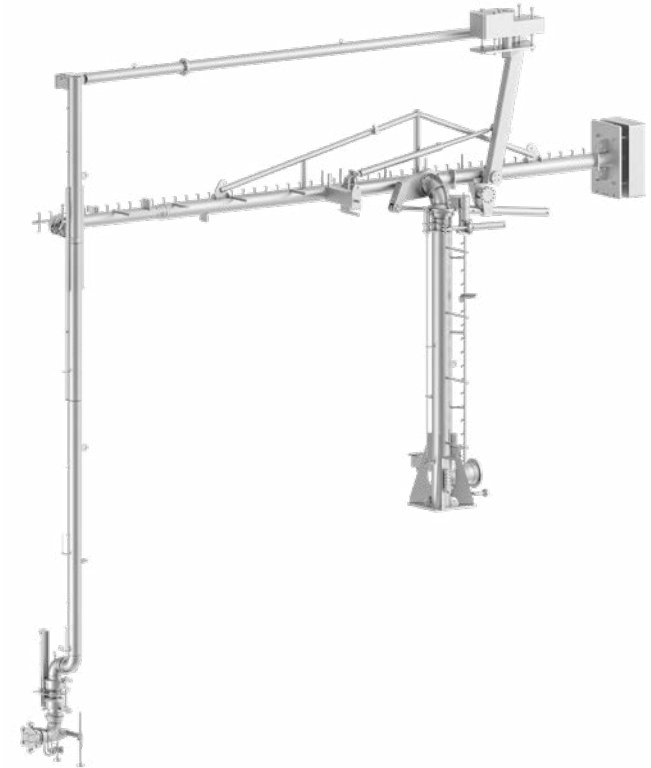
The outboard arm is moved and balanced via a maintenance-free rigid pantograph link. This solution is not only highly reliable but also helps to minimize operation costs as it doesn't need cost-intensive inspections and maintenance. The pantograph system features independent counterweights, directly linked to the inboard and outboard arm. The B0030 ensures accurate balance throughout all maneuvering and connecting positions.

STURDY HYDRAULIC DRIVE CYLINDERS

The B0030 hydraulic cylinder pistons rods are made of durable stainless steel. The piston rods are located inside the cylinder body in parking position, away from the harsh environment, which further enhances their durability. No regular exchange of cylinder sealing sets is required.

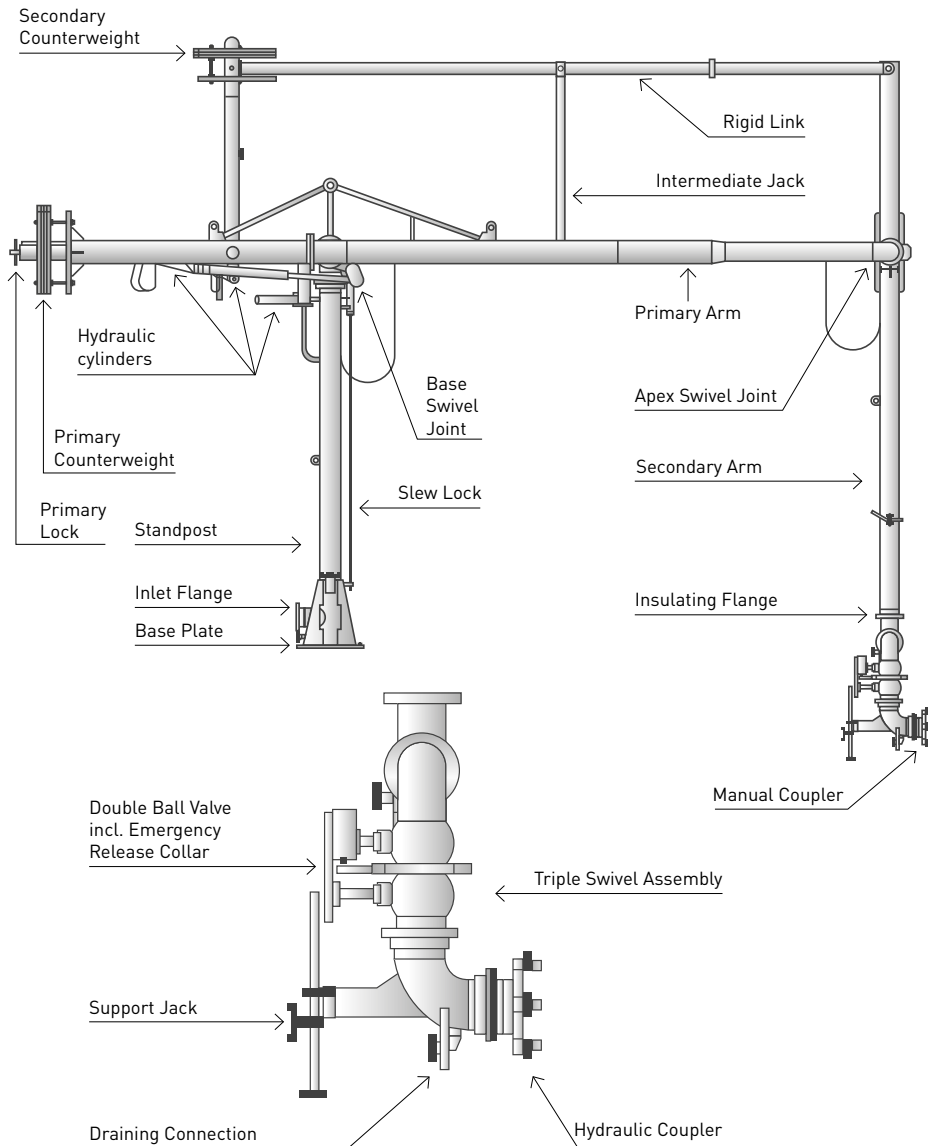
DURABLE SWIVEL JOINTS

The most important feature of a loading arm. Our joints are capable of resisting high bending and axial load combinations due to wind or any arm attitude while retaining low torque characteristics and remaining simple in maintenance. All Emco Wheaton swivel joints have integral flanges that allow for easy replacement of seals.



FEATURES

- Sizes from 4" up to 20"
- Pressure ratings from #150lbs to #300lbs
- Materials: carbon steel, low temperature steel, stainless steel
- Temperature range: from -50°C to +200°C
- Customized solutions on request
- Emco high performance swivel joints



MATERIALS AND TECHNICAL DATA - EXCL. EMERGENCY RELEASE SYSTEM

NB	A + B mm	X mm	C mm	D mm	N mm	S mm	Flow rate m ³ /h	Weight kN	Bending moment kNm
4"	4500	1000	8000	8000	590	3900	300	62	103
6"	4500	1000	8000	8000	590	3900	600	63	105
8"	4500	1000	9000	9000	740	3900	1100	87	144
10"	6000	1500	10000	10000	890	5250	1700	119	230
12"	7000	1500	11000	11000	1040	6250	2500	157	340
16"	7000	1500	11000	11000	1310	6250	4000	224	500

ACCESSORIES

- Range alarm system
- Drainage connections
- Emergency release system (ERS)
- Hydraulic operation
- Hydraulic or manual quick coupler
- Insulation flange
- Nitrogen purge line
- Drain line
- Vacuum breaker
- Vapour return line

DESIGN

- Fully balanced with independent counterweights for inboard and outboard arm
- Self supporting system
- Less man power due to low weight
- Swivel joints either welded-in or flanged
- For transfer of mineral oil, chemicals and Liquefied Petroleum Gas
- Seals available in Buna-N, Viton, PTFE or other specific materials